

**FOR  
THOSE  
WHO  
SEEK**



PROVIDENCE  
COLLEGE



# PROVIDENCE COLLEGE

## IS A PLACE FOR SEEKERS.



It is a community of thinkers and problem-solvers,  
unafraid to ask tough questions and seek big answers.

Guided by *Veritas*, we are united in a search for truth. We open our  
hearts and minds to diverse perspectives to gain a broader  
understanding of our history and what's next.

For those who are curious about the world around them,  
about the past, about the future:

HERE, YOU'LL FIND WHAT YOU'RE LOOKING FOR.



KATIE KUDLA

SCHOOL OF ARTS AND SCIENCES

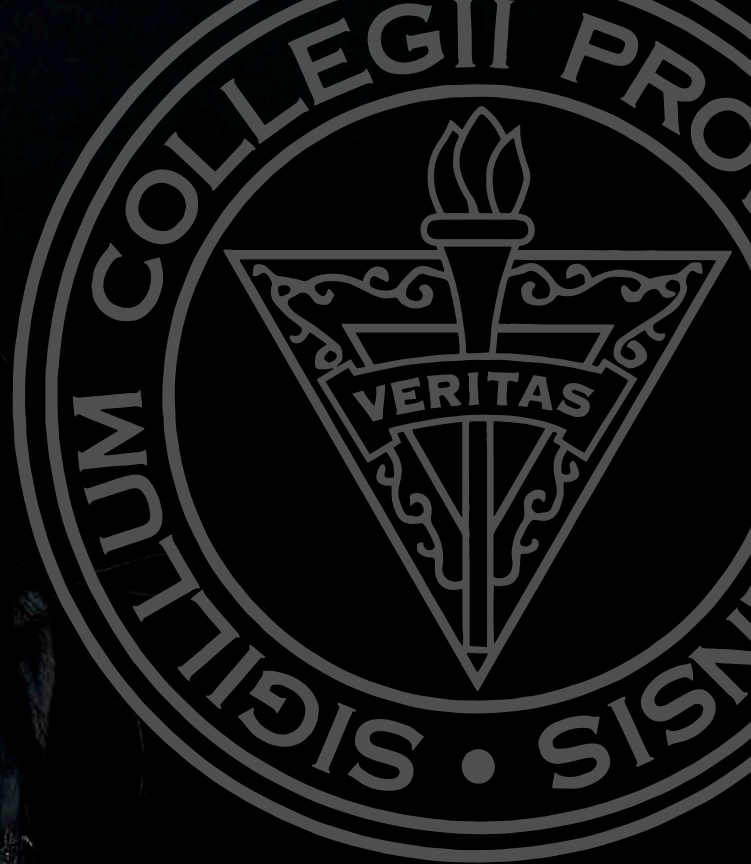
MAJOR: Physics

MINOR: Dance

**Katie Kudla chose to study physics at Providence College** because of its small size and opportunities for research as an undergraduate. But she never would have imagined that in just three years, she'd have completed two summer fellowships from the NASA Rhode Island Space Grant Consortium or visited the world's largest fully steerable radio telescope in West Virginia. Moreover, she spent a semester in England at the University of Oxford and just received a Goldwater Scholarship, the most prestigious undergraduate scholarship in the United States in engineering, mathematics, and the natural sciences.

Katie first discovered a love for physics in high school because "it's something you can relate to everyday life, like kicking a football or flipping on a light switch." Now, as an astrophysicist, she says, "I love quantum mechanics — which is about as abstract as it gets."

# SEEK ANSWERS



→  
Katie minors in dance and is president of the Providence College Dance Company, one of the college's many dance groups.



**“I WOULDN'T HAVE HAD THE SAME OPPORTUNITIES IF I HAD GONE TO A BIGGER SCHOOL.”**



← Along with Joseph Ribaudo, Ph.D., Katie presented original research at the 2022 American Astronomical Society meeting in California.





AIDAN VITO ARONE  
SCHOOL OF BUSINESS  
MAJORS: Finance, Management

“  
There is no more winning and losing in my  
life, rather there is winning or learning.  
”

“**Get comfortable being uncomfortable.**” Aidan Vito Arone says these these four words are the key to success as a business student — and he should know. Aidan arrived at PC not sure what he wanted to do with his life. Today, he’s a wealth manager for The Bulfinch Group and was recently recognized as a Best & Brightest business major by Poets&Quants. At PC, Aiden served as a sector head in PC’s Student-Led Asset Management

program and was named to the Dean’s List every semester. He held internships at Bulfinch (Needham, Mass.) and Project Stanley (New York City), serving as a data analyst developing NHL software for salary cap management.

What’s Aidan’s biggest takeaway from his PC education? “Continue to act as a moral and ethical man in the business world and to never give up my values.”

AVERAGE CLASS SIZE:  
20 STUDENTS



PHI BETA KAPPA INDUCTEE  
A CAPPELLA SINGER

“I’ve always found my love in the arts,” says Mariela Flores, a passionate writer with an affinity for self-expression. An avid storyteller and student of Latina/o literature, she writes and edits for the portfolio section of the campus newspaper. Along with her creative pursuits, she finds fulfillment in helping new students as a peer mentor. “Having someone to anchor you in your first year is highly important. And being a resource, especially for students of color, has been so rewarding.”

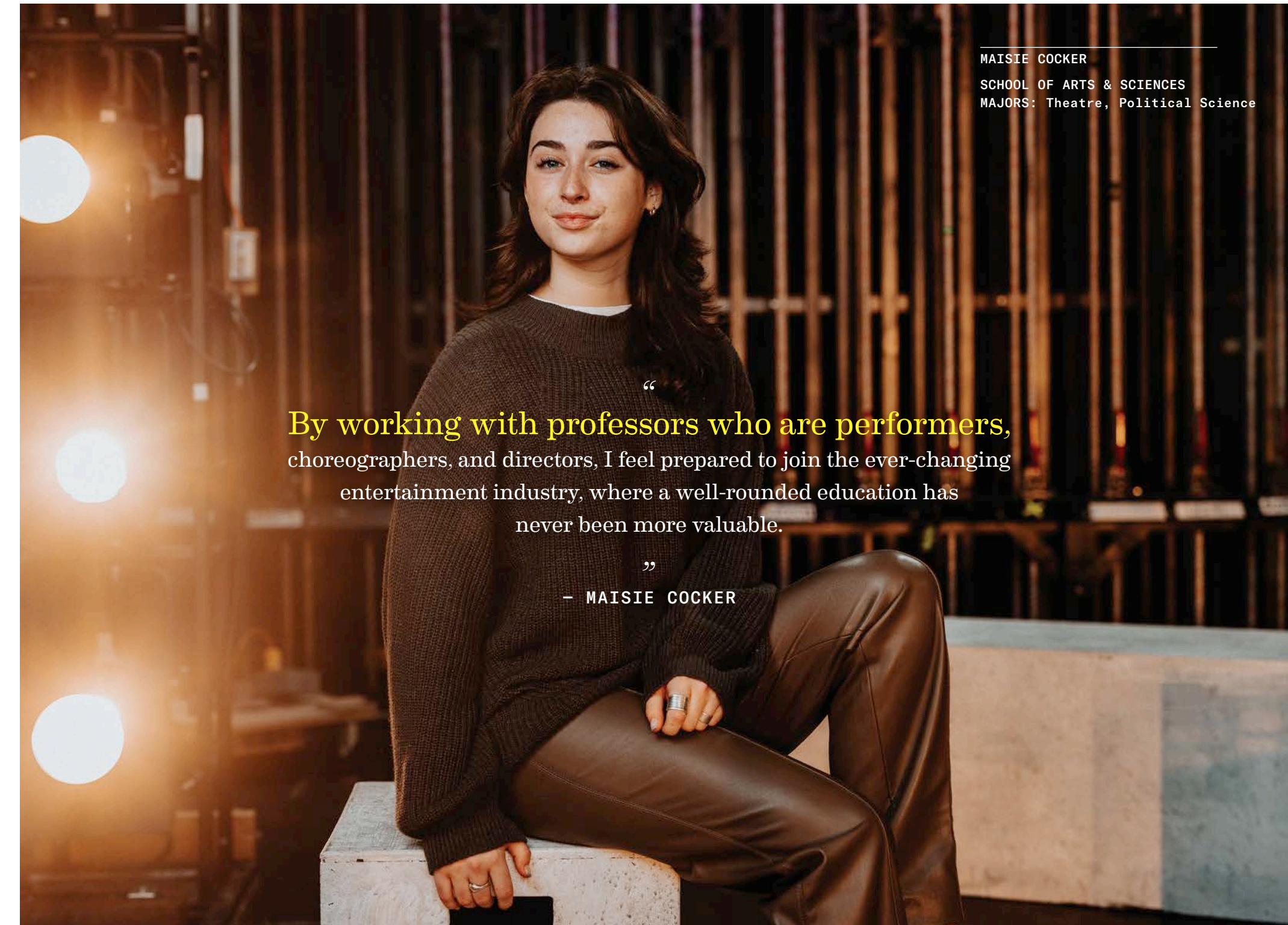
MCCARTHY HALL RESIDENT ASSISTANT  
FRIAR FOUNDATIONS STUDENT  
PEER MENTOR

“PC STUDENTS HAVE AN  
AMAZING WAY OF  
STRETCHING THEMSELVES  
SUPER FAR.”

MARIELA FLORES  
SCHOOL OF ARTS & SCIENCES  
MAJORS: English, Creative Writing  
MINOR: Women’s and Gender Studies









KAITLYN BRESNAHAN

MAJOR: Biology  
MINOR: French

As a junior in high school during the COVID-19 shutdown, Kaitlyn Bresnahan took an online beekeeping course, then added two hives to her family's small farm on Cape Cod. That hobby became her research focus. As a Robert H. Walsh Student Research Fellow at Providence College, Kaitlyn received a \$4,900 stipend to live on campus for the summer and research honeybees with biology professor Rachael Bonoan, Ph.D. Kaitlyn visits hives throughout the state to study the effect of integrated pest management on bee behavior and colony health, hoping to preserve the lives of these important pollinators.

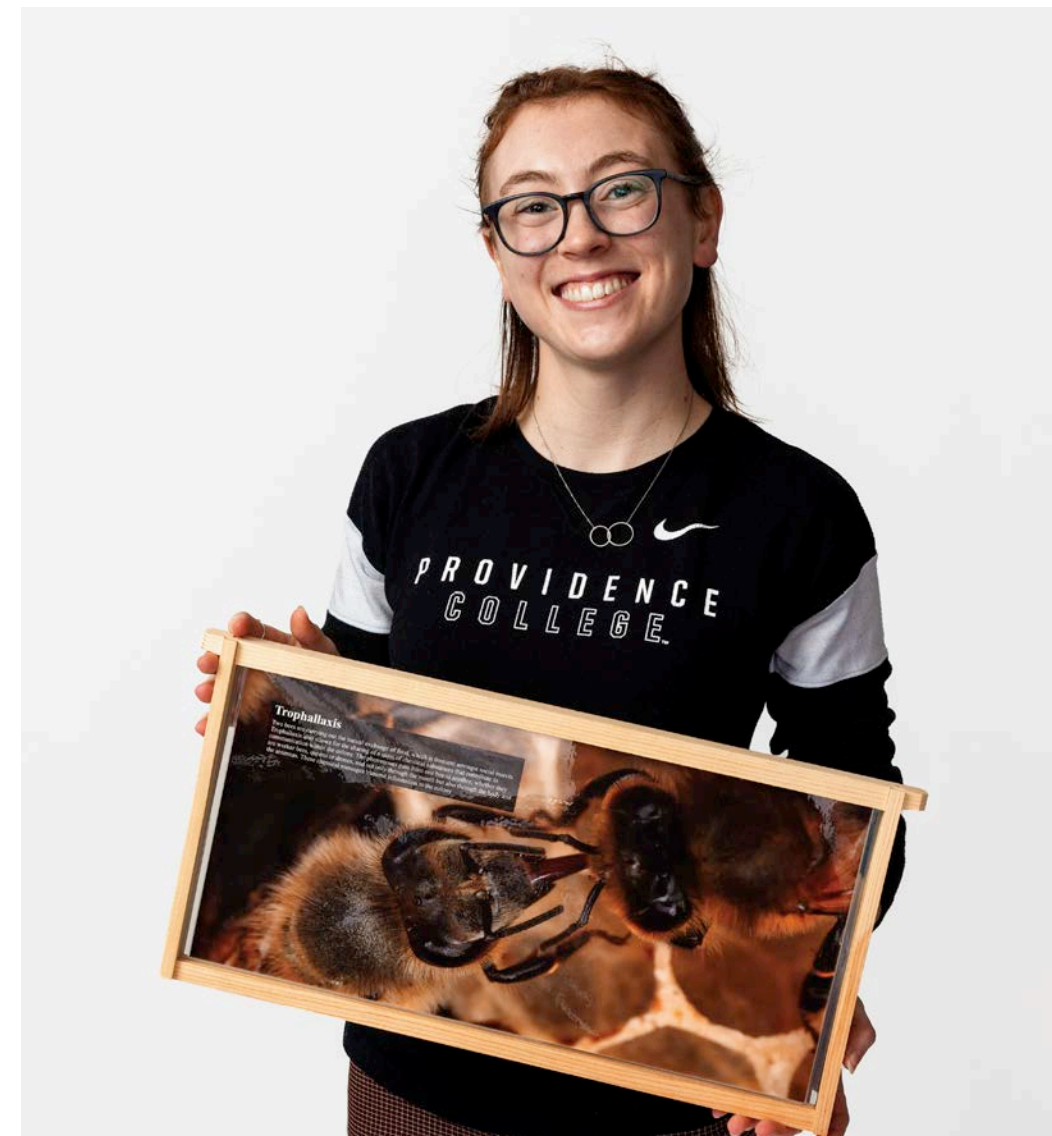
**“I LOVE THIS RESEARCH BECAUSE I GET TO BE OUTSIDE.”**



**93%**

**OF GRADUATES COMPLETE AN INTERNSHIP OR CAREER-BUILDING EXPERIENCE**

Kaitlyn Bresnahan gently squeezes bees to extract nectar so it can be analyzed for nutritional content. The bees return to the hive unharmed.





JUSTIN BABU

SCHOOL OF EDUCATION AND SOCIAL WORK  
MAJOR: Secondary Education-Biology

When Justin Babu applied for the Frederick Douglass Global Fellowship to Ireland, he didn't know he was one of 700 applicants for just 16 spots. He wowed the foundation with research and advocacy extending beyond his major, and they awarded him a fully funded summer fellowship in Dublin, where Douglass met Irish freedom fighter Daniel O'Connell in 1845. When not at work in the research lab or in the community, Justin enjoys co-hosting "Last Three Brain Cells" on WDOM, being a Campus Ministry leader, and exploring Providence.

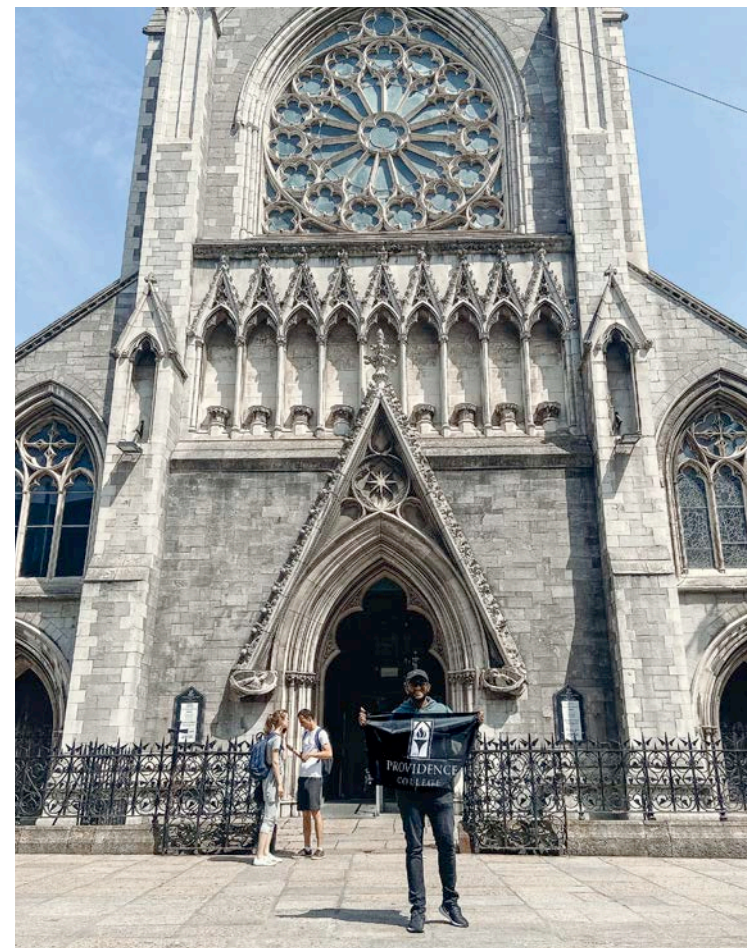


"I've seen first-hand the effects of how sharing resources promotes equity."

JUSTIN BABU



# SEEK CONNECTIONS



Justin was recognized with a 2023 Rev. Martin Luther King Jr. Vision Award for his commitment to social justice and equity.



**"MY PROFESSORS  
KNOW ME AND WHAT  
I'M CAPABLE OF.  
THEY DON'T LET ME  
HIDE MY CARDS."**





DOZENS OF CONCERT VENUES, MUSEUMS, AND THEATERS

RHODE ISLAND'S CAPITAL



SEE YOU IN

PROVIDENCE

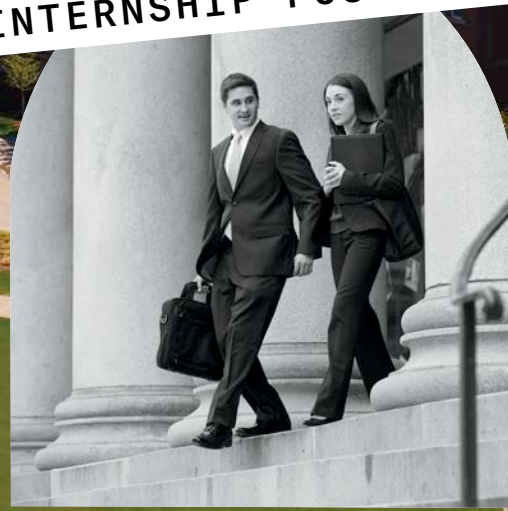
DOWNTOWN PROVIDENCE, 2 MILES FROM CAMPUS

FREE BUS DOWNTOWN WITH A PC-ID

AMTRAK/MBTA STATION MINUTES FROM CAMPUS

FERRY DIRECT TO NEWPORT

ENDLESS INTERNSHIP POSSIBILITIES



4,085

UNDERGRADUATES STUDY AT PC



EDMUND DAIN, PH.D.  
PROFESSOR OF PHILOSOPHY  
2021-22 Top Faculty Teaching Award

“Philosophy begins in wonder — a sense of being puzzled about something, of wanting to find out more,” says Edmund Dain, Ph.D., professor of philosophy.

To Dr. Dain, philosophy isn’t a subject — it’s a skill. You don’t learn about philosophy. You learn to philosophize. To confront big questions: What does it mean to be human? What is the best society? That’s why he loves teaching philosophy majors and non-majors alike.

“In a sense, we are all philosophers. We can’t help but take a stand on philosophical questions. It’s part of everyday life.”



# SEEK MEANING

## MAJORS \* Also Available as Minors

### SCHOOL OF ARTS & SCIENCES

#### BACHELOR OF ARTS

- American Studies
- Art (Studio)\*
  - Ceramics
  - Digital Imaging
  - Drawing
  - Painting
  - Photography
  - Printmaking
  - Sculpture

- Art History\*
- Black Studies\*
- Catholic Studies
- Classics
- Economics\*
- Economics – Business\*
- English – Creative Writing
- English – Literature\*
- French\*
- Global Studies
- History\*
- Humanities
- Individualized Studies
- Italian\*
- Liberal Arts
- Liturgical Music
- Mathematics\*
- Music\*
  - (Musical Theatre Track)
- Music Education
- Music Technology and Production\*
- Philosophy\*
- Political Science\*
- Psychology

- Public & Community Service Studies\*
- Social Science
- Sociology\*
- Spanish\*
- Theatre\*
  - (Musical Theatre Track)
- Theology\*
- Women’s and Gender Studies

#### BACHELOR OF SCIENCE

- Biochemistry†
- Biology†
- Chemistry
- Computer Science\*
- Economics – Quantitative
- Environmental Biology
- Neuroscience
- Physics\*
- Pre-Engineering (3+2)

† Also available as Bachelor of Arts

### SCHOOL OF BUSINESS

#### BACHELOR OF SCIENCE

- Accountancy\*
- Finance\*
- Management
- Marketing\*

#### MASTER OF BUSINESS

- M.B.A. 4+1
  - Available to PC graduates of any degree program

### SCHOOL OF NURSING AND HEALTH SCIENCES

#### BACHELOR OF SCIENCE

- Health Policy & Management
- Health Sciences
- Nursing

### SCHOOL OF EDUCATION AND SOCIAL WORK

#### BACHELOR OF ARTS

- Elementary/Special Education
- Secondary Education
  - Biology
  - Chemistry
  - English
  - French
  - History
  - Italian
  - Mathematics
  - Physics
  - Spanish
- Social Work

#### MASTER OF EDUCATION

- Special Education 4+1
- K-12 Literacy 4+1

12:1 ←  
STUDENT-FACULTY RATIO

Information as of August 2023

## ADDITIONAL MINORS

- Anthropology
- Asian and Asian American Studies
- Business and Innovation
- Catholic Humanities
- Classical History and Cultures
- Classical Languages
- Communication
- Dance
- Data Science
- Evolutionary Biology & Ecology
- Film/Video
- German
- Labor Management Relations – Certificate
- Latin American and Latina/o Studies
- Middle East Studies
- Public Administration – Certificate
- Public & Community Service Studies – Community Health Track
- Spanish for Health Professions
- Writing







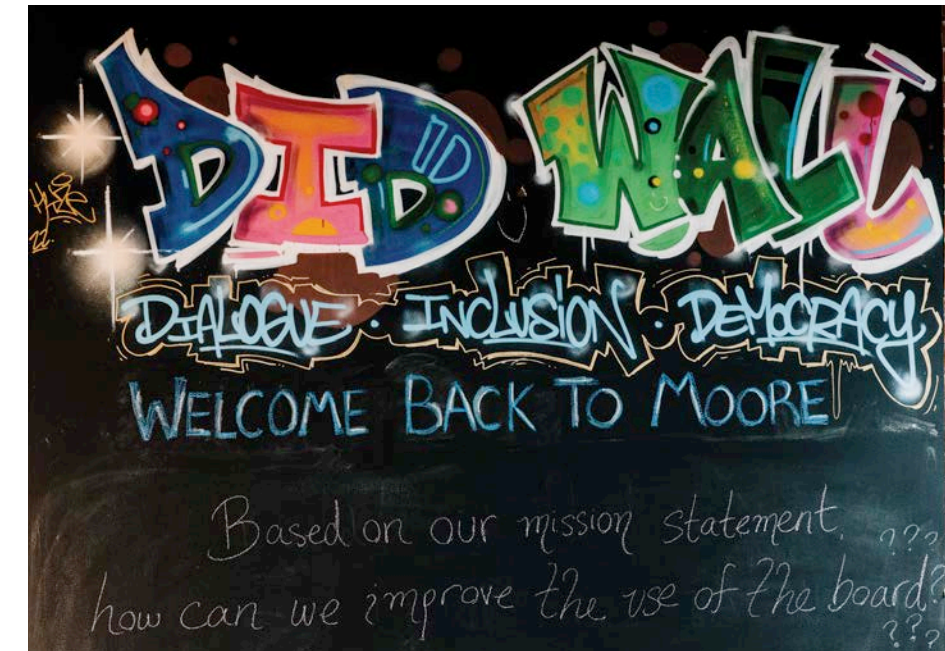
NICHOLAS LONGO, PH.D.  
SCHOOL OF ARTS AND SCIENCES  
Professor of Global Studies  
Co-director of the Dialogue, Inclusion,  
and Democracy (DID) Lab

# ASK IMPORTANT QUESTIONS

**After learning to integrate** deliberative practices in a course on dialogue, diversity, and civic engagement taught by Nick Longo, Ph.D., a team of students created democratic spaces for civil discourse on campus. Called DID walls, which stands for Dialogue, Inclusion, and Democracy, these public discussion boards help to create safe spaces that support the development of well-informed and engaged citizens through civil discourse. This work also extends to other DID Lab initiatives, including courses, workshops, scholarship, and panel discussions.

Dialogue, Inclusion, and Democracy walls throughout campus encourage well-informed and engaged civil discourse.

“  
You can’t solve  
a problem if  
you can’t talk  
about it.  
”  
NICK LONGO, PH.D.





ILEANA SOTO REYES, PH.D.  
ASSISTANT PROFESSOR OF BIOLOGY  
Neuroscience Faculty

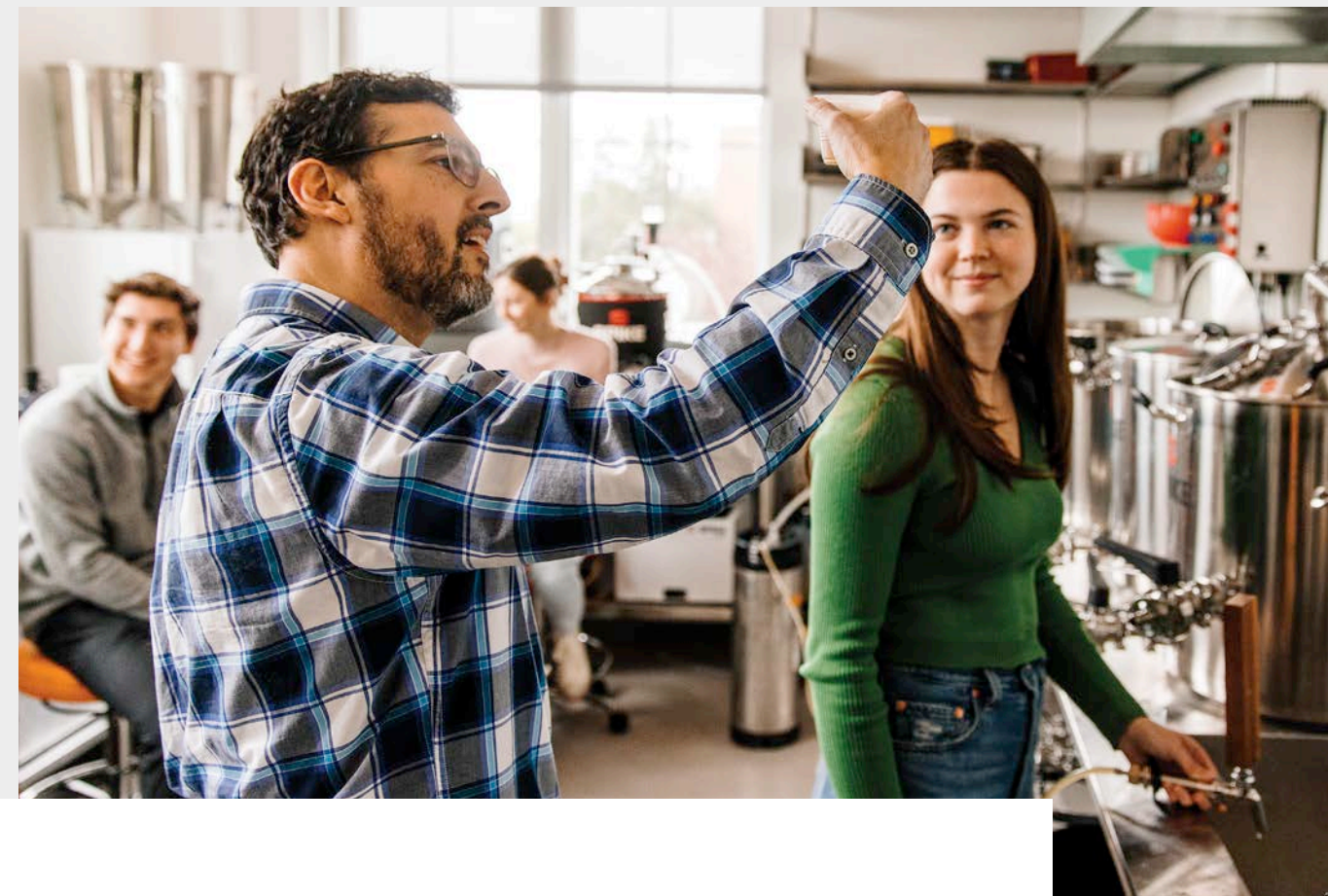
Ileana Soto Reyes, Ph.D. and her students want to change the future of health and wellbeing. They are studying a genetic mutation that causes brain overgrowth and is associated with autism and certain cancers. The specific gene, PTEN, is in the cerebellum, the part of the brain that controls balance and coordination, but Soto Reyes is investigating its connections to the brain's frontal cortex, which controls social function. A faculty member in PC's growing neuroscience program, Soto Reyes has also received a National Institutes of Health R15 Research Enhancement Award to study a mutation associated with NiemannPick Type C Disease, a rare genetic disorder that inhibits transportation of cholesterol and other lipids in cells, resulting in fatal accumulation of fats in the brain and other tissues of the body.



# SEEK SOLUTIONS



**“OUR STUDENTS ARE INVESTIGATORS,  
TRUTH SEEKERS.”**



**1/3**

OF STUDENTS PARTICIPATE IN RESEARCH WITH FACULTY





# EVERY DAY IS **GAME DAY IN FRIARTOWN.**

Don't be fooled by the "small school" buzz — as a Division I member of the NCAA, PC competes on the biggest stage in college sports. Ask anyone who's packed the stands on campus

or rocked the house at the AMP: when you rally with the best student section in the BIG EAST, you're always a part of the action.



**GO FRIARS!**

MARCH MADNESS SWEET 16 (2022)

TWO 2020 TOKYO OLYMPIANS

NCAA MEN'S HOCKEY CHAMPIONS (2015)

NCAA WOMEN'S CROSS COUNTY CHAMPIONS (2013)





LYDIA WATSON

SCHOOL OF ARTS & SCIENCES

MAJOR: Global Studies

MINORS: Spanish and Marketing

SEEK TRUTH

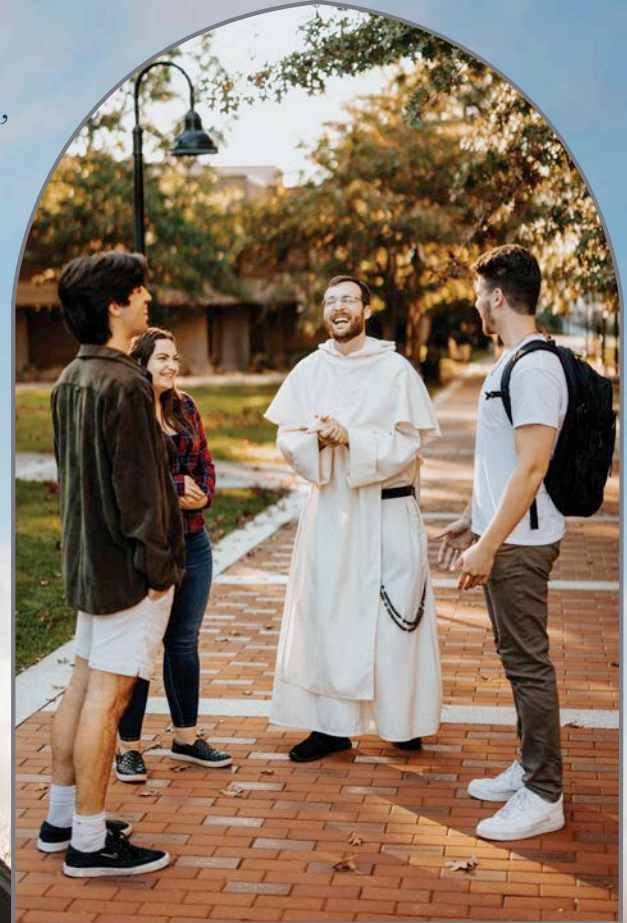
“  
The chapel is a place of peace and rest.

There are so many things on campus to get involved in,  
but when I need time for myself and my relationship with God,  
this is where I can relax and center myself.

”

— LYDIA WATSON

Student Minister for Youth Religious Education  
Providence College Campus Ministry





# SEEK

ANSWERS  
COMMUNITY  
CONNECTIONS  
MEANING  
SOLUTIONS  
TRUTH

**SEEK SOMETHING MORE**  
**PROVIDENCE COLLEGE**

## ADMISSION APPLICATION DEADLINES



### **EARLY ACTION**

Application Due – November 1  
Notification – By January 1

### **EARLY DECISION**

Application Due – November 1  
Notification – By December 1

### **REGULAR DECISION**

Application Due – January 15  
Notification – By April 1

### **EARLY DECISION II**

Application Due – January 15  
Notification – Late February







PROVIDENCE  
COLLEGE

[admission.providence.edu](http://admission.providence.edu)